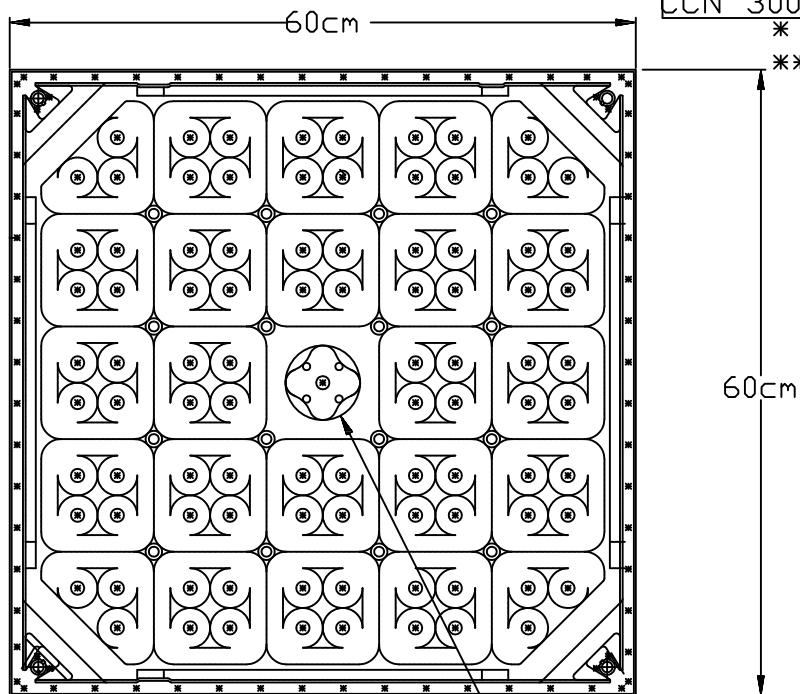


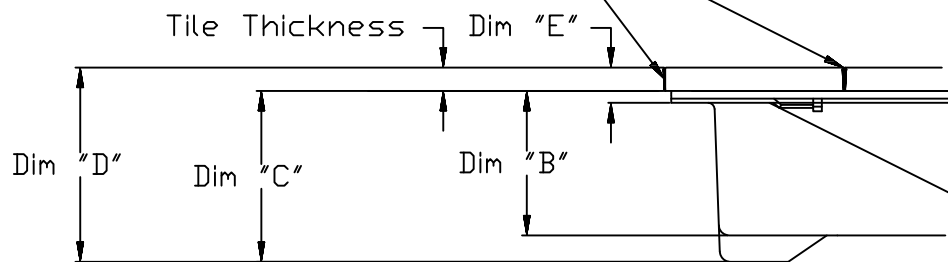
PANEL TYPE	Tile Thickness	DIM "B"	DIM "C"	DIM "D"	DIM "E"
CCN 1000	N/A	N/A	N/A	N/A	N/A
CCN 1250	N/A	N/A	N/A	N/A	N/A
CCN 1500*	1.05cm	3.37-3.49cm	4.03-4.15cm	5.05-5.23cm	1.24-1.30cm
CCN 2000*	1.05cm	3.41-3.53cm	4.07-4.19cm	5.10-5.28cm	1.29-1.35cm
CCN 2500**	1.05cm	3.49-3.61cm	4.15-4.27cm	5.17-5.36cm	1.36-1.42cm
CCN 3000**	1.05cm	3.51-3.64cm	4.17-4.30cm	5.21-5.38cm	1.40-1.44cm

* Maximum 2 pieces of porcelain on CCN1500 or CCN2000 panels

** CCN2500 minimum required for 3 to 5 pieces of porcelain



Edge Band on Perimeter
and Between Porcelain Tile



DETAIL A
SCALE 1 : 4

CLOVERLEAF IS ONLY IN
CCN1000, CCN1250 AND CCN1500
PANELS. HEAVIER PANELS
HAVE NO POCKET

UNLESS OTHERWISE SPECIFIED:

DIMENSIONS ARE IN INCHES (MM)

TOLERANCES:

ANGULAR: ±1

ONE PLACE DECIMAL ±.1

TWO PLACE DECIMAL ±.01

THREE PLACE DECIMAL ±.005

Tate[®]

TITLE:

ConCore With Multit-Piece Porcelain CAD Detail

MATERIAL

FINISH

SIZE

A

DWG. NO.

ConCore With Multi-Piece
Porcelain 60cm

REV

0

DO NOT SCALE DRAWING

SCALE: 1:1

SHEET 1 OF 1