

Side flow baffle reduces airflow when set to 0%

Free hanging design allows for easy retrofit or removal of damper

100% variable setting of each damper zone allows for more accurate airflow control to each vertical segment of the rack, while allowing for nearly true 100% airflow

SPECIFICATIONS

General Information

- Material – Extruded Aluminum.
- Adjustable from top without removing DirectAire® panel.
- Quarter Turn Adjustment for 0-100% adjustment of damper for each zone.
- Drop in fit onto Tate Steel Bolted Stringer system.

UNDERSTRUCTURE OPTIONS

- 2' (60cm) Bolted Stringer Steel System
- 4' (120cm) Bolted Stringer Steel System.

AIRFLOW PANEL COMPATIBILITY

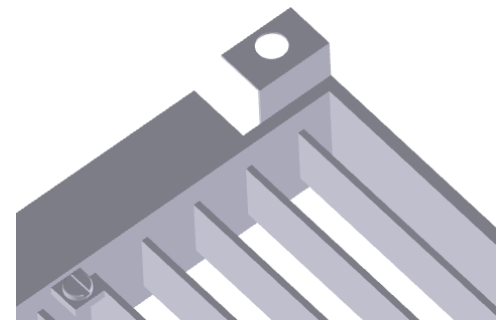
- DirectAire®.

X2 Opposed Blade Damper w/24" (60cm) DirectAire® Panel			
Static Pressure - Pa	100% Open L/s	50% Open L/s	0% Open L/s
4.98	227	132	28
9.96	335	209	50
12.45	388	235	52
14.94	440	250	53
19.92	522	287	60
24.90	558	317	71
29.89	618	347	74
34.87	670	368	78
39.85	701	395	86
44.83	755	420	92
49.81	792	440	96

*All values are per zone, total flow will be doubled for entire DirectAire®



Quarter Turn Adjustment for each zone precise setting of



Support Tabs allow for suspension from pedestal head for panel independent mounting, optional screw down mounting