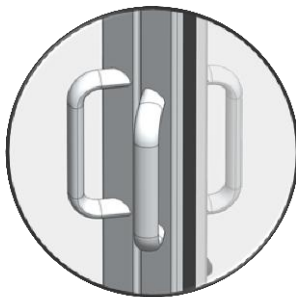
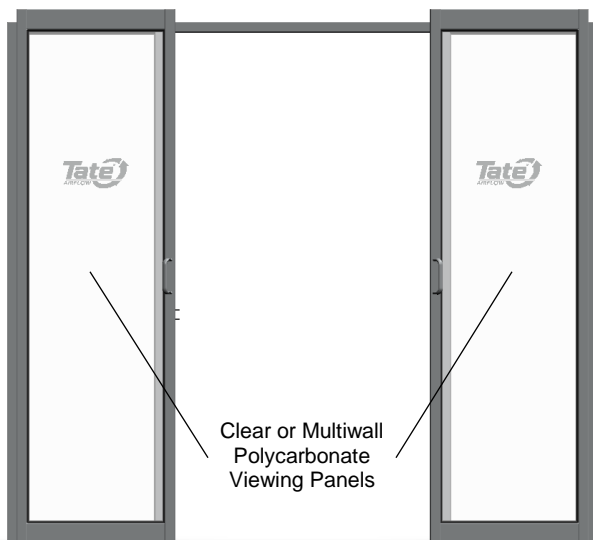


Integrated door slide-locks



Ergonomic angled handles

31.5" (80cm) max



SPECIFICATIONS

General Information

- Pre-assembled panels and integrated door slide-locks allow for a simple and quick installation.
- Perimeter compression gaskets efficiently seal and minimise air leakage.
- Multiwall option adheres to 2013 NFPA 75 flame spread and smoke development requirements.
- Supports aisle widths of 4' to 6' (10cm to 15cm)
- No-threshold design prevents obstructions or tripping.
- Sturdy aluminum framing.
- Fully supported by floor with rack attachments for lateral stability.
- Ergonomic design, with angled handles to reduce pinch points.
- Dual sliding doors with multiwall polycarbonate are listed in UL file SA44425.

Weights

- 200 lbs (91kg) – Clear polycarbonate
- 140 lbs (63kg) – Multiwall polycarbonate

Dimensions

- 90.6" width x 80.0" height x 4.85" depth (230cm x 203cm x 12cm)
- 31.5" (80kg) max opening width.

OPTIONS

Panel Options

- Clear polycarbonate
 - Fully transparent.
 - ASTM D-635 listed.
 - 6mm thick with edge-sealing gaskets.
- Multiwall polycarbonate
 - Semi-transparent.
 - Flame spread index <50.
 - Smoke development <450.
 - ASTM E-84 and ASTM D-635 listed.
 - UL 94 listed.
 - 6mm thick with edge-sealing gaskets.

Aluminum Extrusion Finish Options

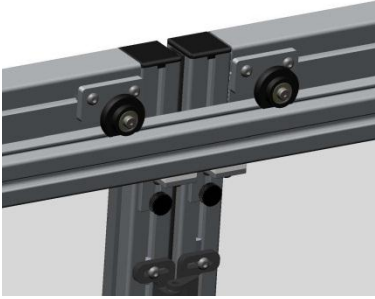
- Clear Anodised
- Black Anodised.

Hardware Options

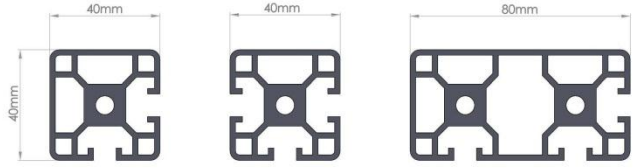
- Standard features includes 2 spring loaded double ball door catches.
- Auto-close available.

INCLUDED COMPONENTS

- ContainAire® Dual Sliding Doors.
- Floor and rack mounting hardware.
- Installation guide.



Roller Detail



Custom Extrusion Profiles



Polycarbonate
Clear/Transparent



Polycarbonate
Semi-Transparent/Multiwall



Aisle End Dual Door Containment
Application with Vinyl Soft Partition

PART NUMBERS

