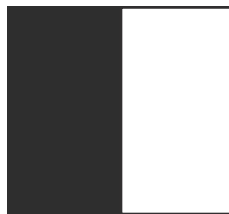


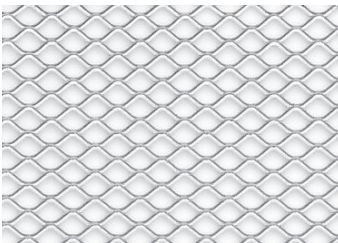
Polycarbonate
Semi-Transparent/Opal
Translucent Multiwall



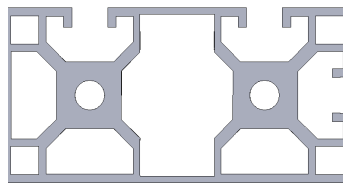
Polycarbonate
Clear/Transparent



Dibond
Black/White



Expanded Metal



Custom Extrusion Profile

GENERAL INFORMATION

- Pre-assembled panels and supplied brackets make for quick installation
- Expanded metal option allows for fire sprinkler penetration
- Compression gaskets efficiently seal and minimize air leakage
- Multiwall panels adhere to 2013 NFPA 75 flame spread and smoke development requirements
- Custom sized for every Job. 4' max width x 20' max height.
- Designed to work with ContainAire Single and Dual doors
- Sturdy aluminum framing
- Fully supported by connections to the floor, ceiling, drywall, or adjacent wall partitions.
- Wall partitions with multiwall polycarbonate are listed in UL file SA44425

Dimensions

- 48" max width x 240" max height x 3.150" depth

FEATURES

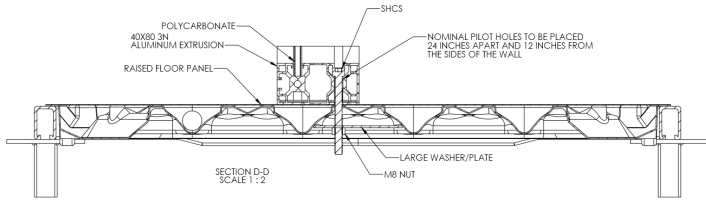
Panel Options

- Clear polycarbonate
 - Fully transparent
 - ASTM D-635 listed
 - 6mm thick
- Multiwall polycarbonate
 - Semi-transparent or Opal Translucent
 - Flame spread index <50
 - Smoke development <450
 - ASTM E-84 and ASTM D-635 listed
 - UL 94 Listed
 - 8mm or 16mm thick
- Dibond
 - Opaque Black or White ACM
 - ASTM E84 Class A and non-combustible
 - UL94 V-0 rated
 - 3mm thick (Black or White)
- Expanded Metal
 - Fire sprinkler penetrable
 - 3003 Aluminum
 - 5mm thick
 - 0.94" x 0.38" diamond pattern

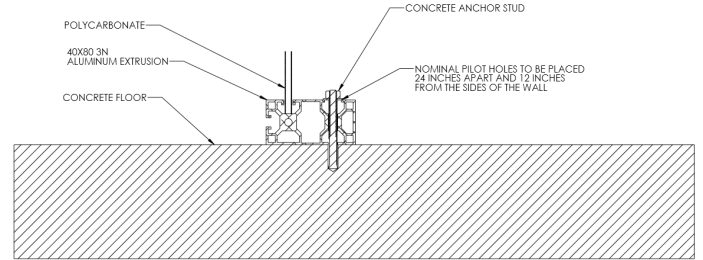
Aluminum Extrusion Finish Options

- Black Painted
- White Painted
- Gray Painted

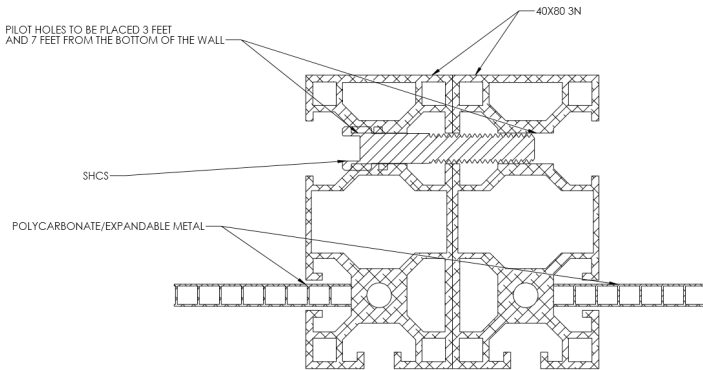
Connection to Raised Floor Detail



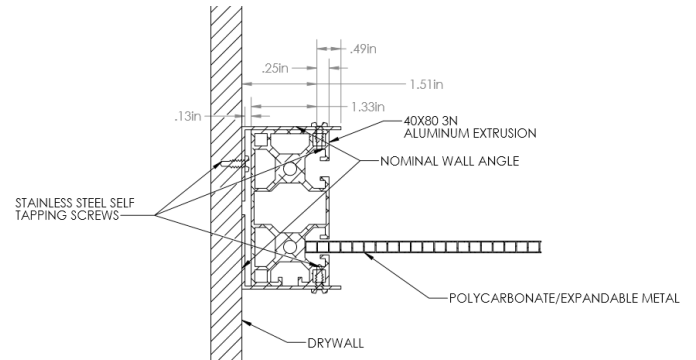
Connection to Concrete Floor Detail



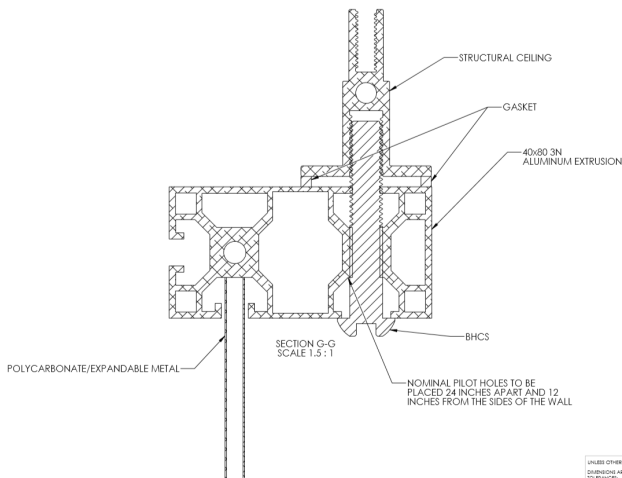
Connection to Adjacent Wall Partition Detail



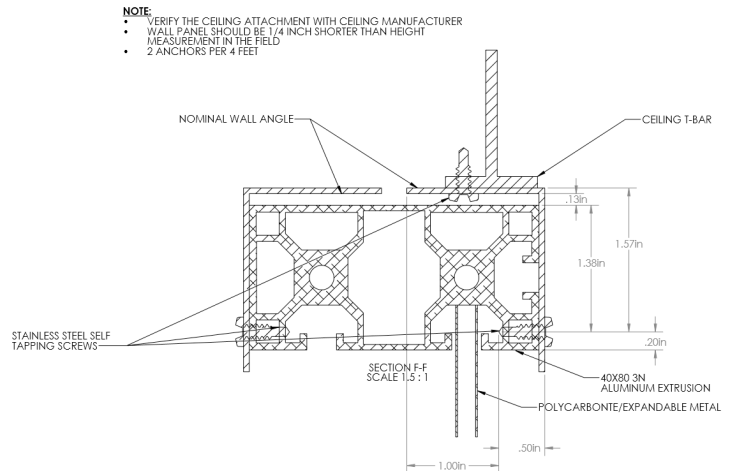
Connection to Drywall Detail



Connection to Structural Ceiling Detail



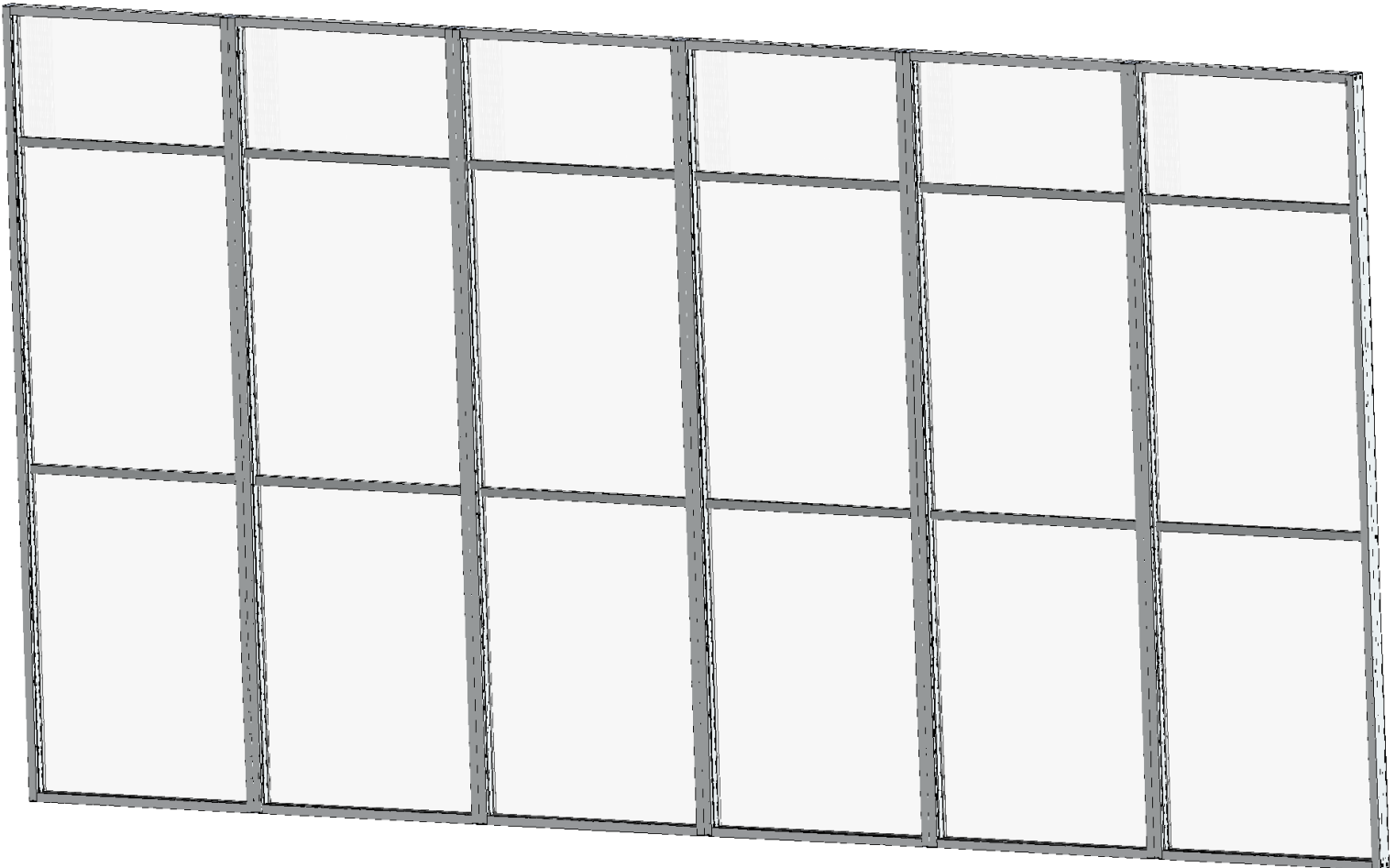
Connection to Acoustical Ceiling Detail



- NOTE**
- VERIFY THE CEILING ATTACHMENT WITH CEILING MANUFACTURER
 - WALL PANEL SHOULD BE 1/4 INCH SHORTER THAN HEIGHT
 - MEASUREMENT IN THE FIELD
 - 2 ANCHORS PER 4 FEET

UNLESS OTHERWISE SPECIFIED, DIMENSIONS ARE IN INCHES TO NEAREST 1/16"

Series of Wall Partitions



Part Numbers

Family Name	Part Name	Aluminum Finish	Height	Width	Inserts
CA: ContainAire	WP: Wall Partition	WP: White Paint BP: Black Paint GP: Grey Paint	inches	inches	C: Clear Polycarb MST: Multiwall Semi-Transparent MOT: Multiwall Opal Translucent BA: Black ACM WA: White ACM EM: Expanded Metal
CA	WP	WP	Max of 240	Max of 48	C/MST/MOT/BA/WA/EM...
CA	WP	BP	Max of 240	Max of 48	C/MST/MOT/BA/WA/EM...
CA	WP	GP	Max of 240	Max of 48	C/MST/MOT/BA/WA/EM...