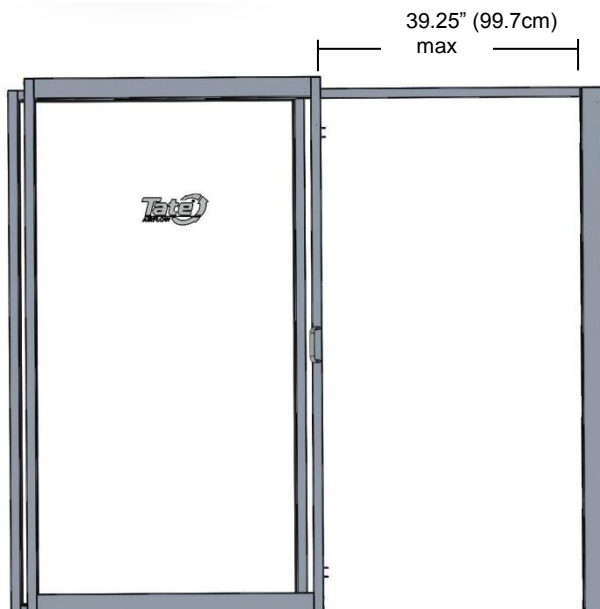


Integrated door slide-locks



Ergonomic angled handles



SPECIFICATIONS

General Information

- Pre-assembled panels and integrated door slide-locks allow for a simple and quick installation
- Perimeter compression gaskets efficiently seal and minimise air leakage
- Right or Left sliding option (defined by which side of the door the handle is located as you look at the aisle from the outside)
- Multiwall option adheres to 2013 NFPA 75 flame spread and smoke development requirements
- Supports aisle widths of 4' to 6' (1.21m x 1.82m)
- No-threshold design prevents obstructions or tripping
- Sturdy aluminum framing
- Fully supported by floor with rack attachments for lateral stability
- Ergonomic handles reduce pinch points
- Single sliding doors with multiwall polycarbonate are listed in UL file SA44425.

Weights

- 170 lbs ((77kg) – Clear polycarbonate
- 120 lbs (54kg) – Multiwall polycarbonate.

Dimensions

- 90.6" width x 80.0" height x 4.85" depth (230cm x 203cm x 12.31cm)
- 39.25" (99.7cm) max opening width

OPTIONS

Panel Options

- Clear polycarbonate
 - Fully transparent
 - ASTM D-635 listed
 - 6mm thick with edge-sealing gaskets
- Multiwall polycarbonate
 - Semi-transparent
 - Flame spread index <50
 - Smoke development <450
 - ASTM E-84 and ASTM D-635 listed
 - UL 94 Listed
 - 6mm thick with edge-sealing gaskets.

Aluminum Extrusion Finish Options

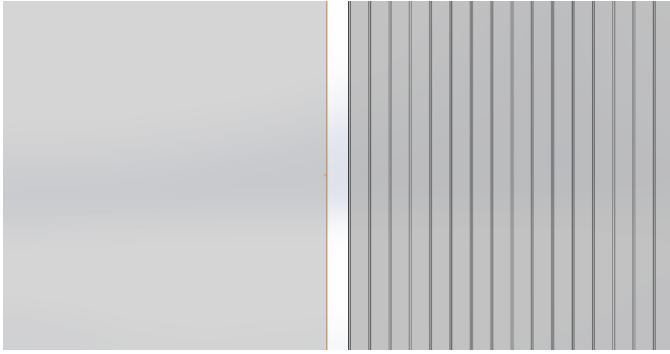
- Clear Anodised
- Black Anodised.

Hardware Options

- Standard features includes 2 spring loaded double ball door catches
- Auto-close available.

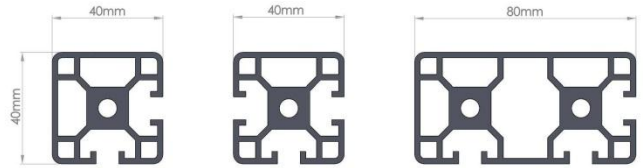
INCLUDED COMPONENTS

- ContainAire[®] Single Sliding Door
- Floor and rack mounting hardware
- Installation guide.



Polycarbonate
Clear/Transparent

Polycarbonate
Semi-Transparent/Multiwall



Custom Extrusion Profiles



Aisle End Single Door Containment Application with
Hard Partitions shown

PART NUMBERS

