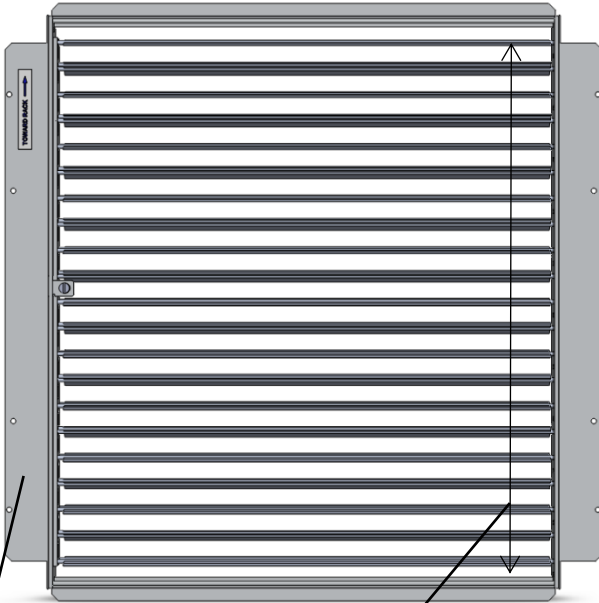
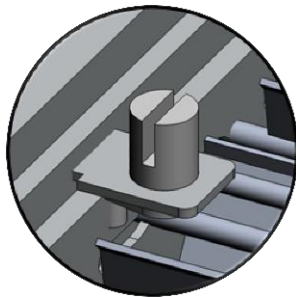


Rack Front Edge

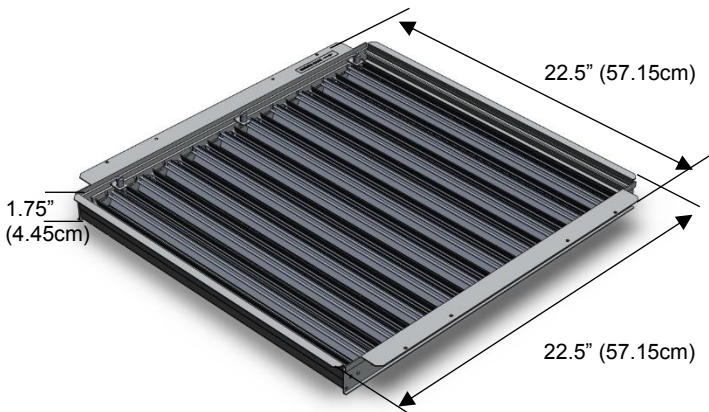


Side Baffles reduce air leakage without pedestal interference

100% variable setting of opposed blades allows for more accurate airflow control, while allowing for nearly true 100% airflow



Quarter-turn damper adjuster accessible through airflow panel



SPECIFICATIONS

General Information

- Adjustable from top without removing raised floor panel.
- Quarter turn adjustment for 0-100% range of damper.
- Field-mounted using self-tapping screws.
- Airflow panel-mounted to minimise air leakage between panel and damper.
- Supports both 24" and 60cm raised floor systems.
- Designed for use with 32% DirectPerf®, DirectAire® AI Panels, and GrateAire® Panels.
- Made from anodised extruded aluminum.
- Damper Weight: 3.8 lbs. (1.7kg).
- Dimensions: 22.5" length x 22.5" width x 1.75" depth (57.15cm length x 57.15cm width x 4.45cm depth).

REQUIRED COMPONENTS

- Torque Limited Screw gun or screwdriver
- Screws for 32% Directional® Perf (PN#:11525)
- Screws for DirectAire® AI and GrateAire® (PN#:20701)

AIRFLOW PANEL OPTIONS

- DirectAire® AI (24" and 60cm versions)
- 32% DirectPerf® (24" and 60cm versions)
- GrateAire® (24" and 60cm versions).

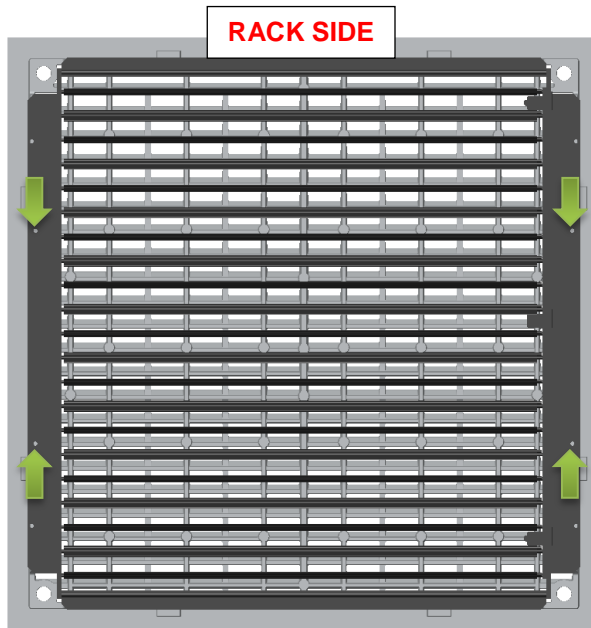
FINISH OPTIONS

- Clear Anodised Aluminum.

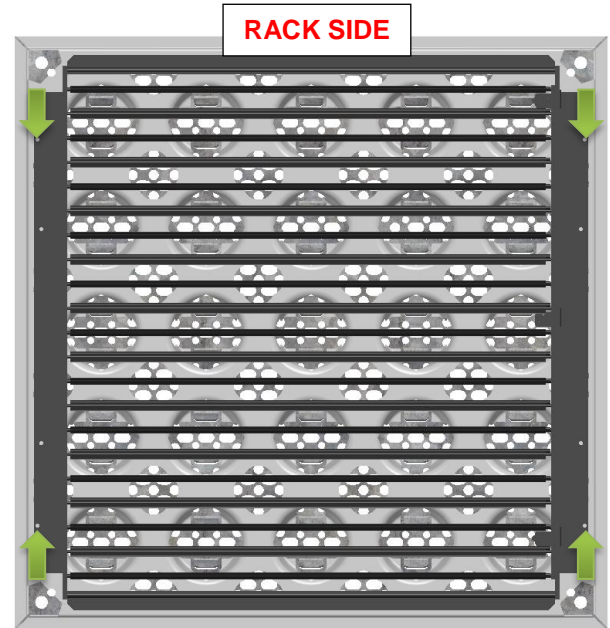
AIRFLOW PERFORMANCE

| Static Pressure (in Pa) | Opposed Blade Damper w/ DirectAir® Al Panel | | Opposed Blade Damper w/ GrateAir® Panel | | Opposed Blade Damper w/ 32% DirectPerf® Panel | |
|-------------------------|---|---------------|---|---------------|---|---------------|
| | 100% Open (L/s) | 0% Open (L/s) | 100% Open (L/s) | 0% Open (L/s) | 100% Open (L/s) | 0% Open (L/s) |
| 4.98 | 404 | 60 | 382 | 61 | 226 | 54 |
| 9.96 | 640 | 84 | 592 | 85 | 327 | 75 |
| 12.45 | 671 | 93 | 601 | 96 | 363 | 84 |
| 14.94 | 730 | 102 | 654 | 103 | 388 | 90 |
| 19.92 | 823 | 121 | 752 | 119 | 454 | 103 |
| 24.92 | 921 | 141 | 842 | 135 | 501 | 120 |
| 29.89 | 1029 | 156 | 903 | 151 | 551 | 134 |
| 34.87 | 1092 | 166 | 998 | 164 | 595 | 145 |
| 39.85 | 1143 | 180 | 1022 | 173 | 628 | 158 |
| 44.83 | 1251 | 186 | 1104 | 186 | 649 | 178 |
| 49.81 | 1300 | 200 | 1182 | 199 | 712 | 176 |

INSTALLATION



DirectAir® Al



32% DirectPerf® & GrateAir®

The DirectAir® Al panels utilise the inner 4 holes to mount the Opposed Blade Damper. Please ensure the airflow panel and OBD is oriented correctly in respect to the server rack.

The GrateAir® and 32% DirectPerf® panels utilise the outer 4 holes to mount the Opposed Blade Damper. Please ensure the airflow panel and OBD is oriented correctly in respect to the server rack.