

TOP VIEW

## SPECIFICATIONS

### General information

- Panel weight: 50kg/m<sup>2</sup> bare.
- All steel welded construction filled internally with a cementitious core material.
- Protected from corrosion by a powder paint finish.
- Class A flame spread rating.
- Non-combustible material.

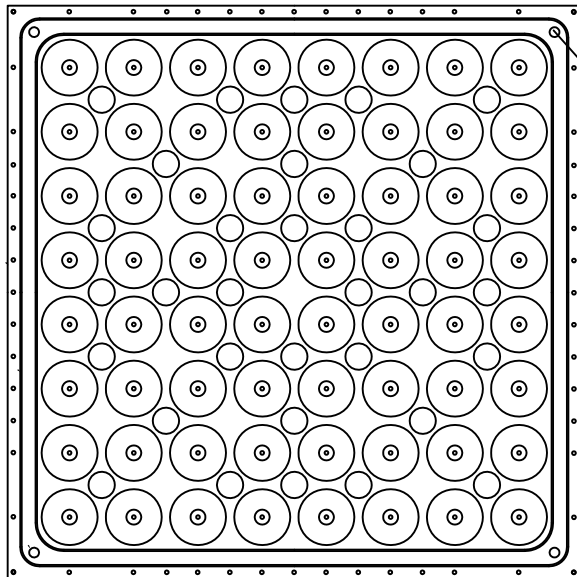
### UNDERSTRUCTURE OPTIONS

- 120cm Bolted Stringer w/ fillet welded head

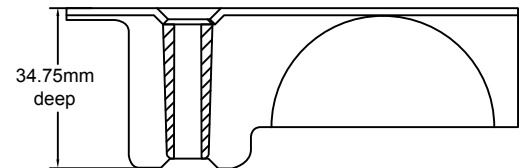
### COVERING OPTIONS

Tile factory laminated with integral trim edge

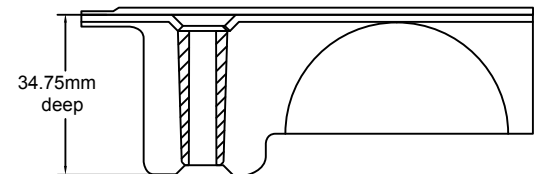
- 1.5mm HPL(Colour) \_\_\_\_\_
- 3mm HPL(Colour) \_\_\_\_\_
- Bare Painted \_\_\_\_\_



BOTTOM VIEW



Bare Panel



Laminated Panel With Integral Trim

System Performance Criteria		(Tested on Actual Understructure)*						
System Type	Understructure	SYSTEM WEIGHT	STATIC LOADS			ROLLING LOADS		IMPACT LOADS
			Design Loads	Ultimate Loads	Safety Factor	10 Passes	10,000 Passes	
ConCore® ICSF2000-60cm	Bolted Stringer	56 kg / m <sup>2</sup>	8.9kN	Min. 17.8kN	Min. 2.0	6.7kN	5.6kN	0.8kN

1. System Design Load is based on permanent set  $\leq 0.010"$  and is verified by loading panels in accordance with the CISCA concentrated load method but with panels installed on actual understructure instead of steel blocks. (Testing on blocks does not represent performance of an actual installation.) Ultimate, Rolling, and Impact Load tests are performed using CISCA Test Procedures.
2. Safety factor is Ultimate load divided by Design load.