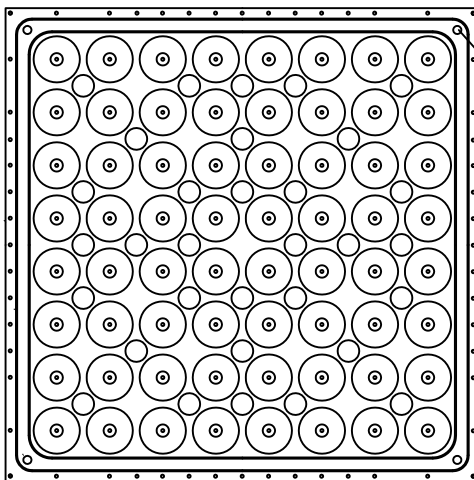
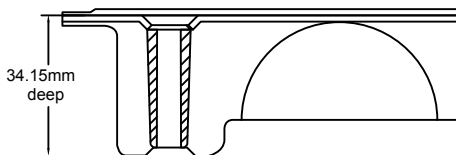


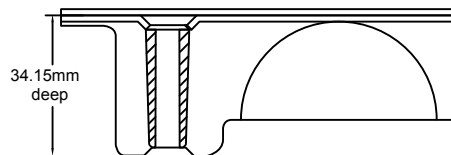
TOP VIEW



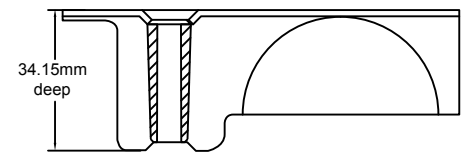
BOTTOM VIEW



Laminated Panel With Integral Trim



Laminated Panel With MONO PVC



Bare Panel

### SPECIFICATIONS

#### General information

- Panel weight: 44 kg/m<sup>2</sup> bare.
- All steel welded construction filled internally with a cementitious core material.
- Protected from corrosion by a powder paint finish.
- Class A flame spread rating.
- Non-combustible material.

#### UNDERSTRUCTURE OPTIONS

- Cornerlock
- 60cm Bolted Stringer
- 120cm Bolted Stringer
- 60cm UFAD Bolted Stringer
- 60cm UFAD Clip-on Stringer

#### COVERING OPTIONS

Tile factory laminated with integral trim edge

- 1.5mm HPL(Colour) \_\_\_\_\_
- 3mm HPL(Colour) \_\_\_\_\_

Tile factory laminated with mono edge

- 2mm PVC (Colour) \_\_\_\_\_
- 2mm Conductive PVC (Colour) \_\_\_\_\_

Tile factory laminated with mono edge

- 3mm PVC (Colour) \_\_\_\_\_
- 3mm Conductive PVC (Colour) \_\_\_\_\_

For additional laminate options contact Sales

Bare Painted Panel Options

- Bare Painted Finish to accept carpet tile application

### System Performance Criteria

(Tested on Actual Understructure)\*

System Type	Understructure	SYSTEM WEIGHT	STATIC LOADS			ROLLING LOADS		IMPACT LOADS
			Design Loads	Ultimate Loads	Safety Factor	10 Passes	10,000 Passes	
ConCore ICSF1500-60cm	Cornerlock	44 kg / m <sup>2</sup>	6.7kN	Min. 13.3kN	Min. 2.0	5.6kN	4.4kN	0.6kN
	Bolted Stringer	52 kg / m <sup>2</sup>	6.7kN	Min. 13.3kN	Min. 2.0	5.6kN	4.4kN	0.6kN

1. System Design Load is based on permanent set ≤ 0.010" and is verified by loading panels in accordance with the CISCA concentrated load method but with panels installed on actual understructure instead of steel blocks. (Testing on blocks does not represent performance of an actual installation.) Ultimate, Rolling, and Impact Load tests are performed using CISCA Test Procedures.

2. Safety factor is Ultimate load divided by Design load.