



## **ContainAire®**

### **Dual Sliding Door Auto Closer Kit**



## **Pictogram User Installation Guide**



## Introduction

Thank you for choosing a Tate Airflow product. Tate Airflow products are engineered to maximize the efficiency of your data center air handling system by isolating cold supply and hot exhaust airflow. We would be interested in hearing any comments you may have on this installation manual, product, or overall experience. Please call or e-mail our Technical Service Department:

Phone: 410-799-4200

E-mail: [TateInfo@tateinc.com](mailto:TateInfo@tateinc.com)

## Safety

- 2 or more people are required for the handling and installation of this system.
- Wear personal protective equipment (PPE) when drilling, cutting, or installing. PPE includes gloves, safety eyeglasses, hardhats, etc.
- Do not leave the site unattended until the installation is complete.
- Do not drill into the raised floor or server rack without first ensuring that no electrical wires or cabling are in the area of drilling.

## Included Components

- Auto Closing Assembly
- 2 x 90 Degree Angle Brackets
- 2 x M6 30mm Screw
- 2 x M6 16mm Screw
- 2 x M6 Nylock Nuts
- 2 x Spacer
- 2 x Door Mounts
- 4 x M6 50mm Screw
- 6 x M6 T-nut

## Required Tools

- Level
- Allen Wrench (6mm, 4mm)



## Installation

### Step 1: Offset Closing Clasps

The Tate Dual Sliding Door features closing clasps. To ensure proper sealing when utilizing the Auto Closing Assembly, these clasps will need to be offset. Using an Allen Wrench, loosen the screws attaching the clasps and slide one of the clasps offset from the other to disengage them.



Figure 1 – Offset Closing Clasps



### Step 2: Attach Door Mounts

Attach the door mounts to one of the sliding door's outermost frame using 1 x M6 T-nut and 1 x M6 30mm Screw. Tighten the 30mm Screw with the Allen Wrench being careful not to over tighten. Repeat Step 2 on the other door.

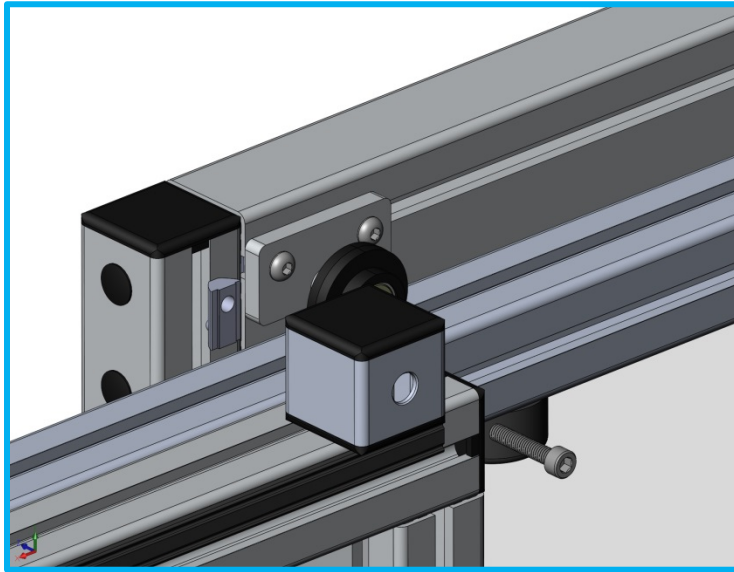


Figure 2 - Door Mounts Exploded



Figure 3 – Door Mounts Complete



### Step 3: Attach Auto Closing Assembly Header Mount

Attach the Auto Closing Assembly to the Header Mount on one side of the sliding door using 1 x M6 16mm Screw and 1 x M6 T-nut as seen in Figure 4. Tighten the 16mm screw with the Allen Wrench being careful not to over tighten. To ensure smooth operation ensure that the piston is level and that all attachment points (each bracket and the end block attached to the door) are in alignment. Repeat Step 3 on for the other side.

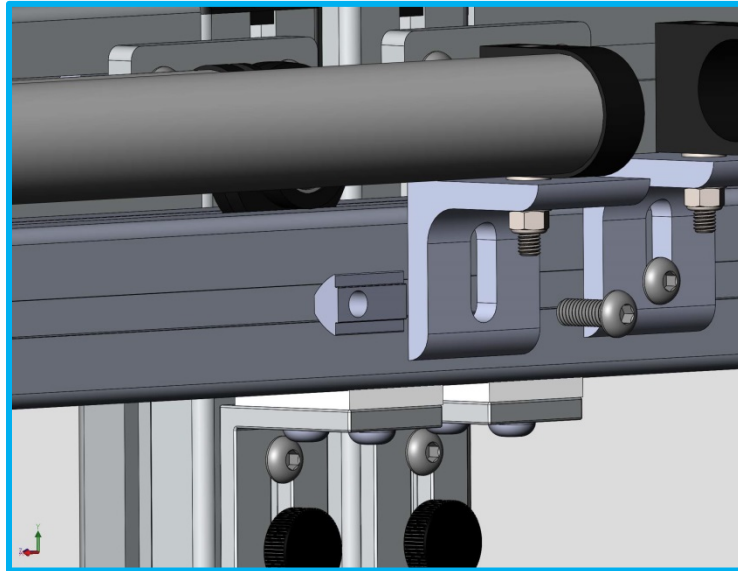


Figure 4 - Auto Closing Assembly Header Mount Exploded

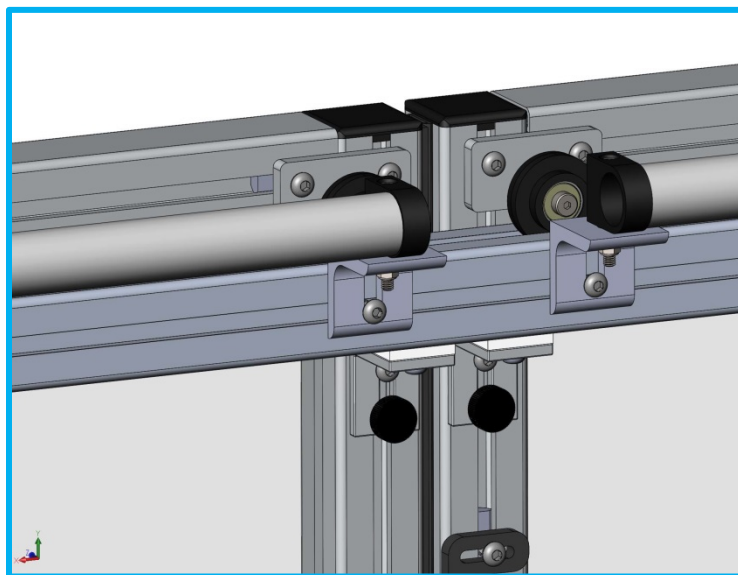


Figure 5 - Auto Closing Assembly Header Mount Complete



#### **Step 4: Attach Auto Closing Assembly Frame Mount**

Attach the Auto Closing Assembly to the Frame Mount on one side of the sliding door using 1 x M6 T-nut, 1 x Spacer, and 1 x M6 50mm Screws as seen in Figure 6. Tighten the 50mm Screw with the Allen Wrench being careful not to over tighten. Thread the remaining 50mm screw in to the head of the closer. To ensure smooth operation ensure that the piston is level and that all attachment points (each bracket and the end block attached to the door) are in alignment. Repeat Step 4 on the other side.

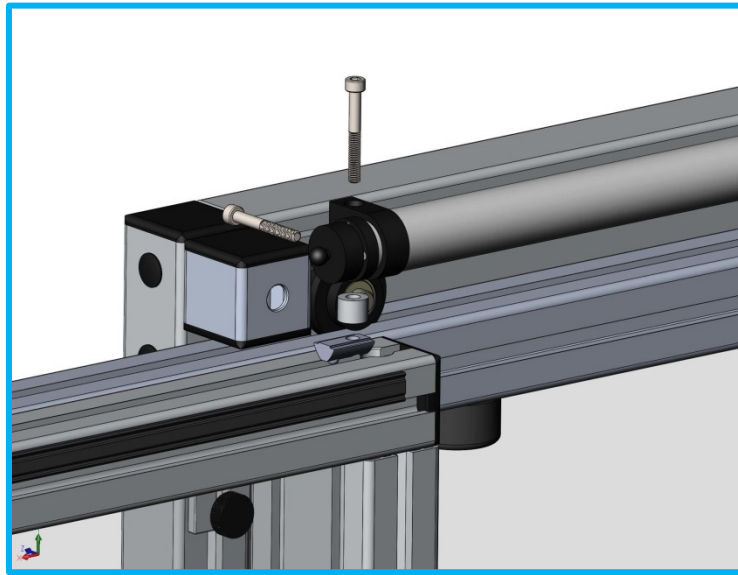


Figure 6 - Auto Closing Assembly Frame Mount Exploded

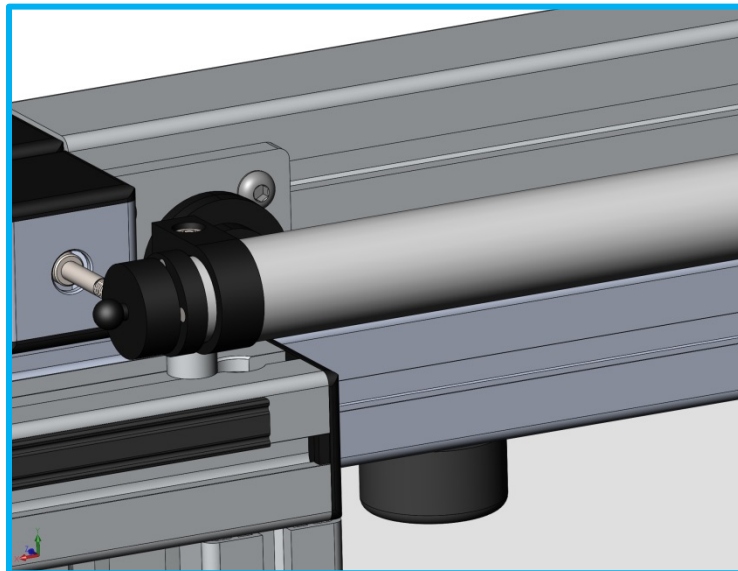


Figure 7 - Auto Closing Assembly Frame Mount Complete