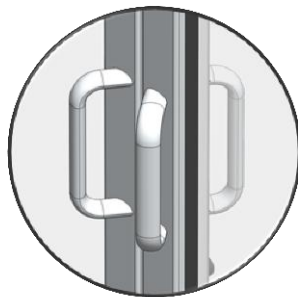
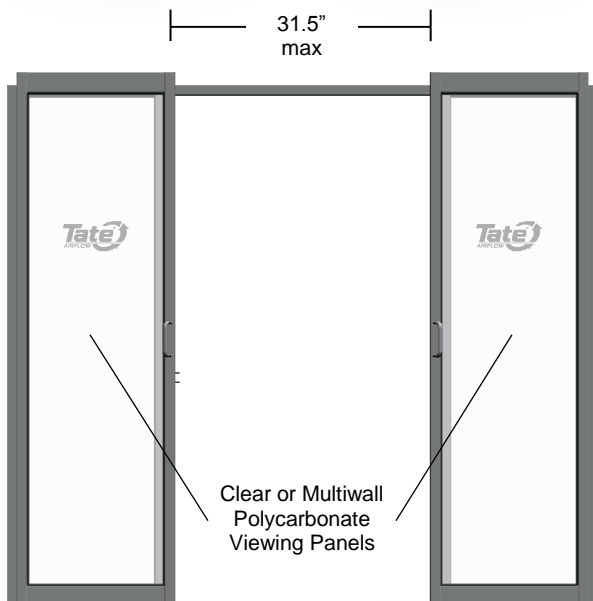


Integrated door slide-locks



Ergonomic angled handles



SPECIFICATIONS

General Information

- Pre-assembled panels and integrated door slide-locks allow for a simple and quick installation
- Perimeter compression gaskets efficiently seal and minimize air leakage
- Multiwall option adheres to 2013 NFPA 75 flame spread and smoke development requirements
- Supports aisle widths of 4' to 6'
- No-threshold design prevents obstructions or tripping
- Sturdy aluminum framing
- Fully supported by floor with rack attachments for lateral stability
- Ergonomic design, with angled handles to reduce pinch points
- Dual sliding doors with multiwall polycarbonate are listed in UL file SA44425

Weights

- 200 lbs. – Clear polycarbonate
- 140 lbs. – Multiwall polycarbonate

Dimensions

- 90.6" width x 80.0" height x 4.85" depth
- 31.5" max opening width

OPTIONS

Panel Options

- Clear polycarbonate
 - Fully transparent
 - ASTM D-635 listed
 - 6mm thick with edge-sealing gaskets
- Multiwall polycarbonate
 - Semi-transparent
 - Flame spread index <50
 - Smoke development <450
 - ASTM E-84 and ASTM D-635 listed
 - UL 94 listed
 - 6mm thick with edge-sealing gaskets

Aluminum Extrusion Finish Options

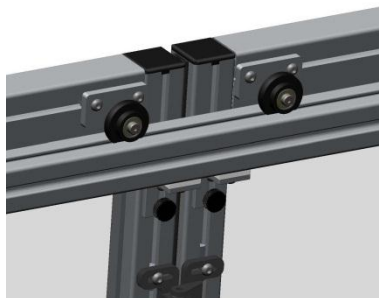
- Clear Anodized
- Black Anodized

Hardware Options

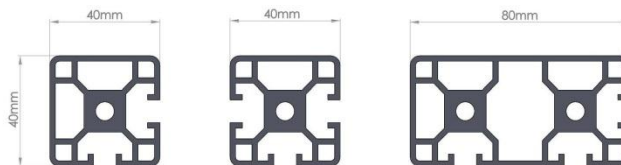
- Standard features includes 2 spring loaded double ball door catches
- Auto-close available

INCLUDED COMPONENTS

- ContainAire® Dual Sliding Doors
- Floor and rack mounting hardware
- Installation guide



Roller Detail



Custom Extrusion Profiles



Polycarbonate
Clear/Transparent



Polycarbonate
Semi-Transparent/Multiwall



Aisle End Dual Door Containment
Application with Vinyl Soft Partition

PART NUMBERS

