

## POSITILE®

PosiTile® is recommended and warranted for use with Tate's ConCore® Panel and PosiLock™ understructure with corner locking screws.

### ● Site Requirements

1. PosiTile® carpet must be stored at a minimum temperature of 65° F prior to installation.
2. PosiTile® and the Access Floor must be conditioned at the room temperature for 24 hours before starting installation and must remain at that level for the duration of the installation. The installation area must be closed to the weather.
3. The access floor must be clean and free of all foreign matter.

## SPECIAL INSTRUCTIONS

1. Check the quantity, color and lot numbers of the tiles before beginning the job. Do not mix dye lots (MO#). All claims for damages or deficiencies must be made prior to installation.
2. If the carpet tile boxes are crushed or damaged during the transit, the material needs to be taken out of the boxes and re-stacked in order to lay flat.
3. Be sure that other contractors such as painters and masons have completed their work, or take the necessary precautions before installation begins.

Make sure the Access Floor installation is within tolerances before installing PosiTile® – The access floor installation must be sound, square and level before installing PosiTile®.

## ACCESS FLOOR SQUARENESS

Check the squareness of the panel installation by performing the following quick test:

1. Measure diagonally from corner A to corner B across the surface of a 15 x 15 panel area (see *Figure #30*).
2. Now measure diagonally from corner C to corner D. The difference between the two measurements cannot exceed 1/8". If it does exceed 1/8" then the floor is out of square and corrective action is required.

### ● Access Floor Tightness

The tightness is tested by measuring across twelve panels. The length across the panels must not be less than 24' and must not exceed 24'-1/8" (see *Figure #31*). If the measurement is less than 24', then the panels were installed too tight – which may make the carpet tiles too tight to lay flat at the edges. If the measurement is greater than 24'-1/8", then the panels were installed too loose -which may produce unacceptable gaps between the carpet tiles. Both conditions require corrective measures.

### ● Access Floor Visual

A quick visual test for PosiTile® alignment would be to evaluate the joints. Corrective action is required if saw tooth joints occur. Joints must be at right angles for squareness.

### ● Access Floor Levelness

The access floor panel must be flush from panel to panel and at joints.

Figure 30: Checking for squareness

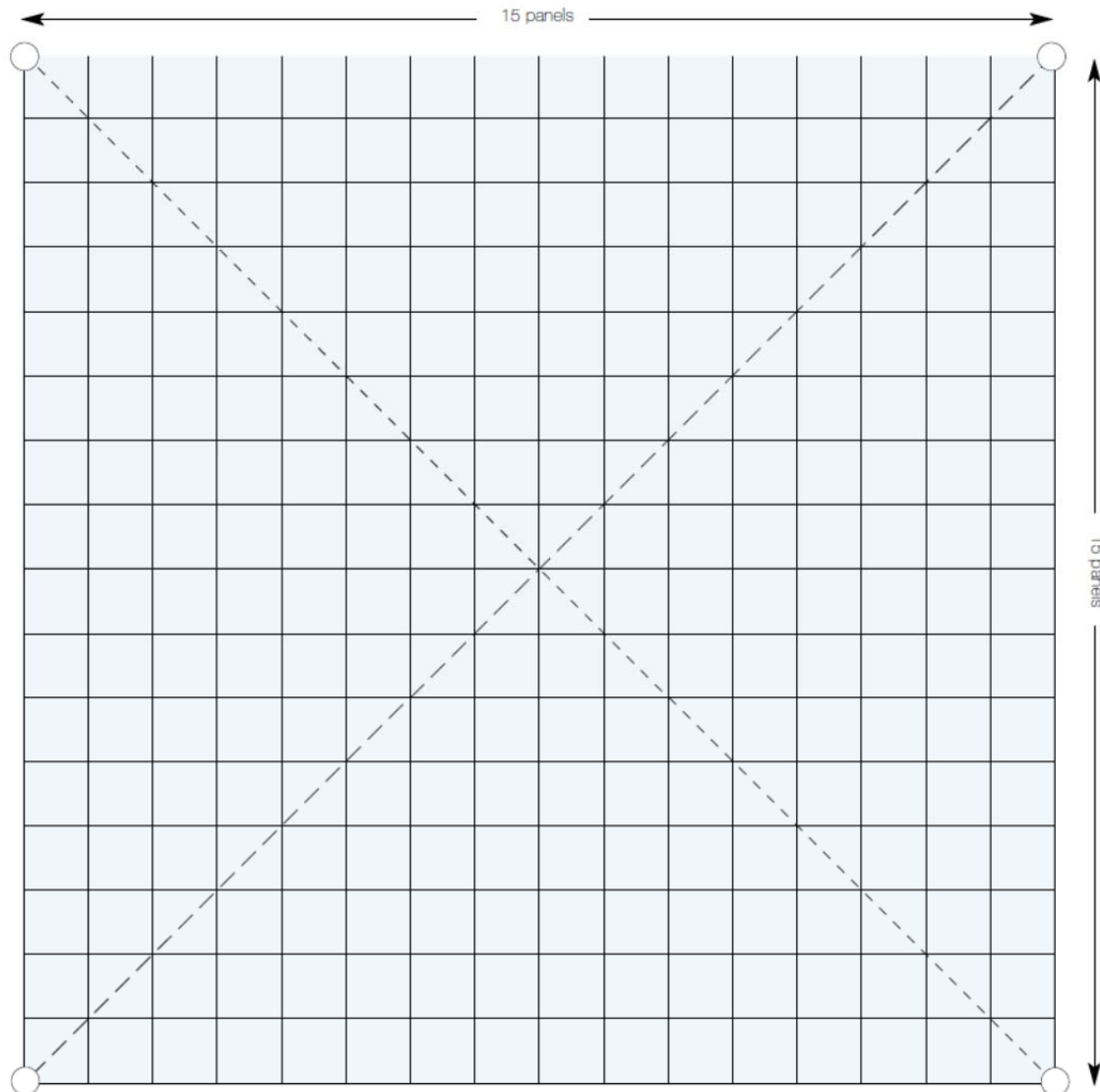
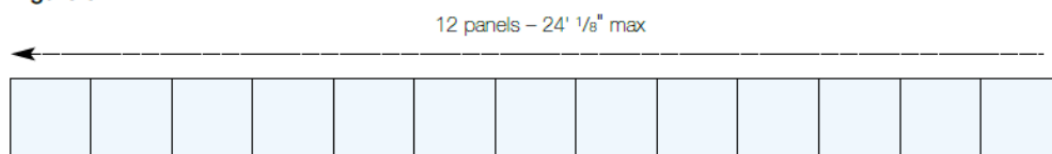


Figure 31



The distance from one end to the other of any line of  
12 panels should not exceed 24' 1/8"

## POSITILE® INSTALLATION

1. Before installing PosiTile® remove the green plastic plugs from each hole with a flat screw driver. Note: 24" Domestic products will not have the green plugs installed.
2. During installation and construction do not allow pallet jacks or dollies to travel on carpet face. Providing clear paths for construction and move-in activity by exposing rows of bare panels is recommended.
3. The full (uncut) tiles should be installed first. You can start anywhere on the floor except for the perimeter. The customer may dictate the starting point based on move-in requirements. Otherwise, a good place to start is where work traffic will be the least. If there will be small sections of carpet tile at the perimeter with no positioning buttons the sections should be adhered to panels with double-faced tape or releaseable adhesive.
4. Before installing PosiTile®, remove backer from double sided tape located in the four corners. Roll PosiTile® carpet as shown below with double sided tape to the outside. Position carpet on panel and slowly roll carpet down until buttons engage in PosiTile® holes. Once buttons are in place, roll edges with double sided tape down to panel avoiding contact until all four buttons are in place and press firmly.
5. Install all tiles in the direction indicated by the pile directional arrows printed on the back of the tiles. Carpet may be installed in one direction or in quarter turn pattern.
6. The loop pile tiles will have some yarn 'blossoming' at the edges; which is inherent in loop pile construction. The face yarn or the strands from the primary backing may require occasional trimming.
7. During transit the PosiTile® buttons may cause a temporary indentation on the face of the carpet. This will blossom out in a few days.
8. PosiTile® seams may be visible depending on style and color. The seams will blend in over time due to traffic. Vacuuming with a brush beater during cleanup is helpful.

## QUESTIONS ABOUT POSITILE®:

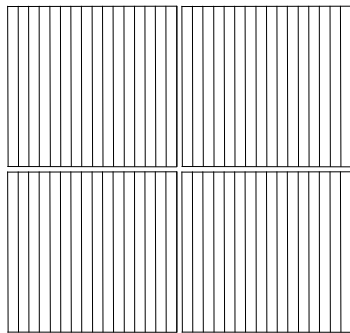
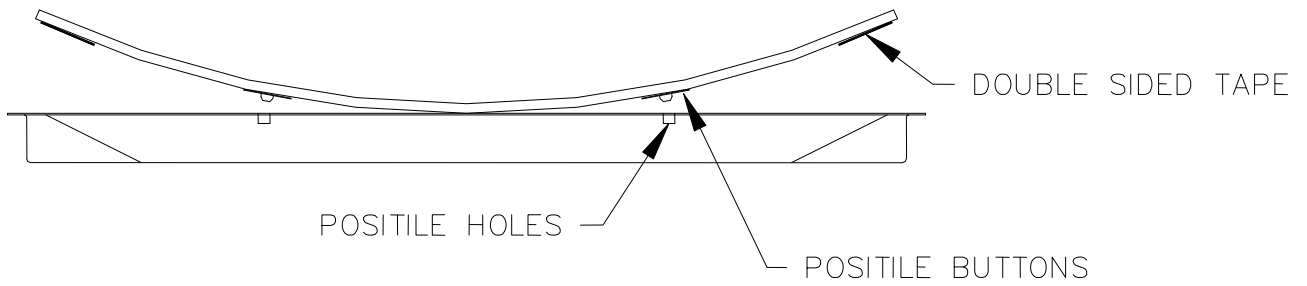
Specific questions regarding installation issues not covered here should be referred to:

**Tate Technical Services 1-800-231-7788**

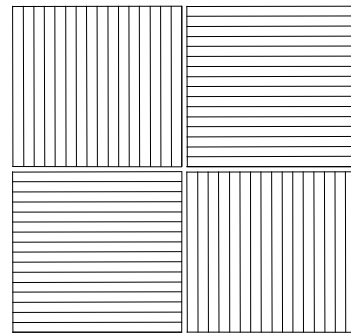
Monday -Friday between 8:30 am and 5:00 pm EST.

Any variance from these procedures are the responsibility of the installer.

# Tandus Positile® Installation



STRAIGHT PATTERN



QUARTER TURN  
PATTERN